

SNAPTRANS

SnapTrans Limited - Airfreight ULD Dimensions

LD-1

IATA ULD Code: AVC Contoured Container
 Also known as: AVC, AVD, AVK, AVJ
 Forkable: AVY
 Classification: LD-1
 Rate Class: Type 8
 Suitable for: B747, B767, B777, MD-11
 Internal volume: 4.8 cu. m (169.5 cu. ft)
 Maximum gross weight: 1588 kg (3501 lb)



LD-2

IATA ULD Code: DPE Contoured Container
 Also known as: APA, DPA
 Forkable: DPN
 Classification: LD-2
 Rate Class: Type 8D
 Suitable for: B767
 Internal volume: 3.4 cu.m (120 cu. ft)
 Maximum gross weight: 1225 kg (2700 lb)



LD-3

IATA ULD Code: AKE Contoured Container
 Also known as: AKE, AVA, AVB, AVC, AVK, AVA, DVE, DVP, XKS, XKG
 Forkable: AKN, AVN, DKN, DYN, XKN
 Classification: LD-3
 Rate Class: Type 8
 Suitable for: A300, A310, A330, A340, B747, B767, B777, DC-10, MD-11, L1011
 Internal volume: 4.3 cu. m (152 cu. ft)
 Maximum gross weight: 1588 kg (3500 lb)



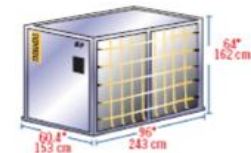
Insulated LD-3

IATA ULD Code: RKN
 Classification: LD-3
 Rate Class: Type 8
 Suitable for: A300, A310, A330, A340, B747, B767, B777, DC-10, MD11, L1011
 Internal volume: 3.0 cu.m (109 cu. ft)
 Maximum gross weight: 1588 kg (3500 lb)
 Temperature Control Range: -20C to +20C



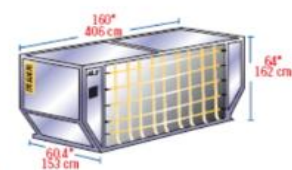
LD-4

IATA ULD Code: ALP Rectangular Container
 Also known as: ALD, AWD, AWZ, DLP
 Forkable: ALB, ALC, AWB, AWC
 Classification: LD-4
 Rate Class: Type 8
 Suitable for: B767, B777
 Internal volume: 5.7cu. m (201 cu. ft)
 Maximum gross weight: 2449 kg (5399 lb)



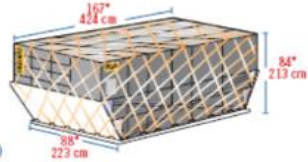
LD-6

IATA ULD Code: ALF Contoured Container
 Also known as: AWD, AWF
 Forkable: AWC
 Classification: LD-6
 Rate Class: Type 6W
 Suitable for: A300, A310, A330, A340, B747, B777, DC-10, MD-11, L1011
 Internal volume: 8.9 cu. m (314 cu. ft)
 Maximum gross weight: 3175 kg (7000 lb)



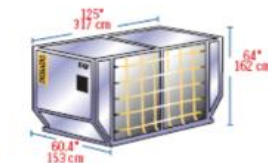
LD-7

IATA ULD Code: XAW P1P Pallet with fixed angle wings and net
 Classification: LD-7
 Rate Class: Type 5
 Suitable for: Wide body. All aircraft
 Maximum volume with overhang: 14.0 cu. m (494 cu. ft)
 Maximum gross weight: 5000 kg (11023 lb)



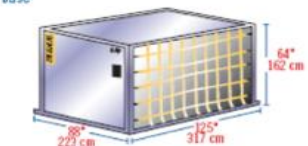
LD-8

IATA ULD Code: DQF
 Also known as: ALE, ALN, DLE, DLF, DQP, MQP
 Classification: LD-8
 Rate Class: Type 6A
 Suitable for: B767
 Internal volume: 6.85 cu. m (242 cu. ft)
 Maximum gross weight: 2450 kg (5401 lb)



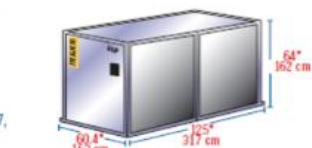
LD-9

IATA ULD Code: AAP Enclosed Pallet on P1P base
 Also known as: AA2, XAG, XAV
 Classification: LD-9
 Rate Class: Type 5
 Suitable for: A300, A310, A330, A340, B747, B767, DC-10, MD-11, L1011
 Internal volume: 9.1 cu. m (321 cu. ft)
 Maximum gross weight: 4624 kg (10194 lb) lower deck
 6000 kg (13227 lb) main deck



LD-11

IATA ULD Code: ALP Rectangular Container
 Also known as: ALD, AWZ, AWB, AWD, AWZ, DLP, DWB, MWB
 Refrigerated version: RWB, RWD, RWZ
 Classification: LD-11
 Rate Class: Type 6
 Suitable for: A300, A310, A330, A340, B747, B777, DC-10, MD-11, L1011
 Internal volume: 7.2 cu. m (253 cu. ft)
 Maximum gross weight: 3176 kg (7002 lb)



A-2

IATA ULD Code: DAA
 Classification: A-2
 Suitable for: B747, B747F, DC8, DC10, A300/F
 Internal volume: 12.6 cu. m (444 cu. ft)
 Maximum gross weight: 6033 kg (13300 lb)

